

2009-2011

Cancer Program Report



Tammy Walker
Cancer Center

 Salina Regional Health Center

Comprehensive
Cancer Care
Close to Home

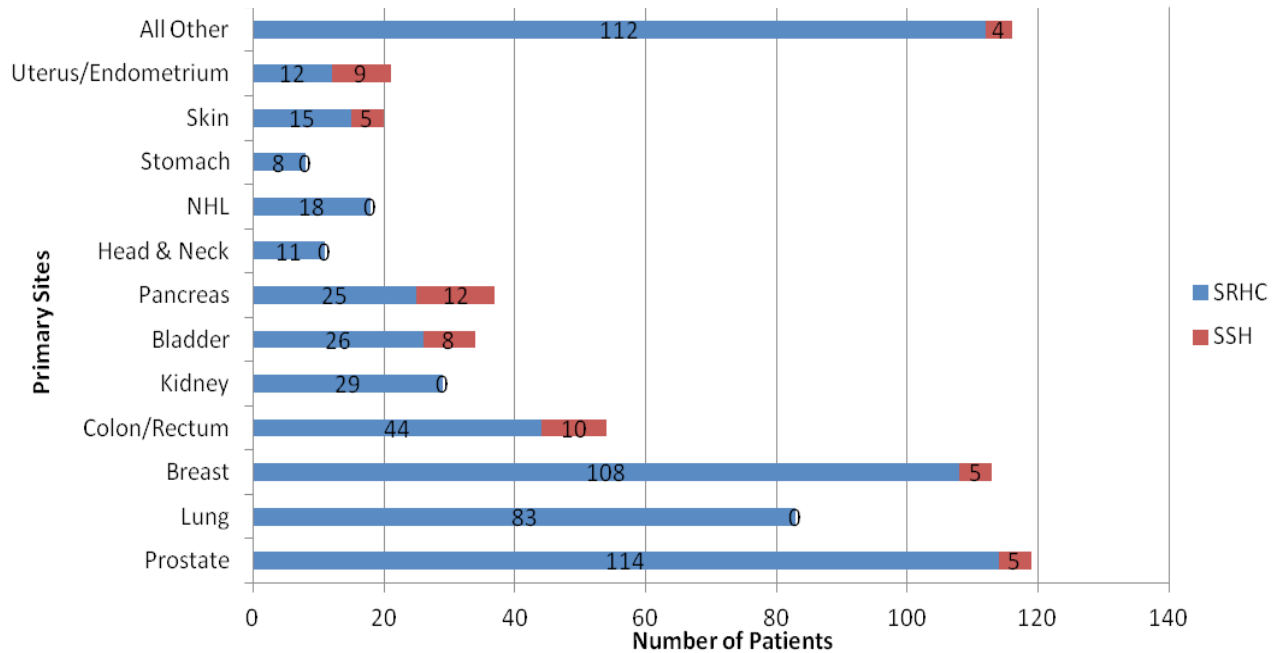
A publication reviewing Cancer Program Activities and Data

Cancer Registry

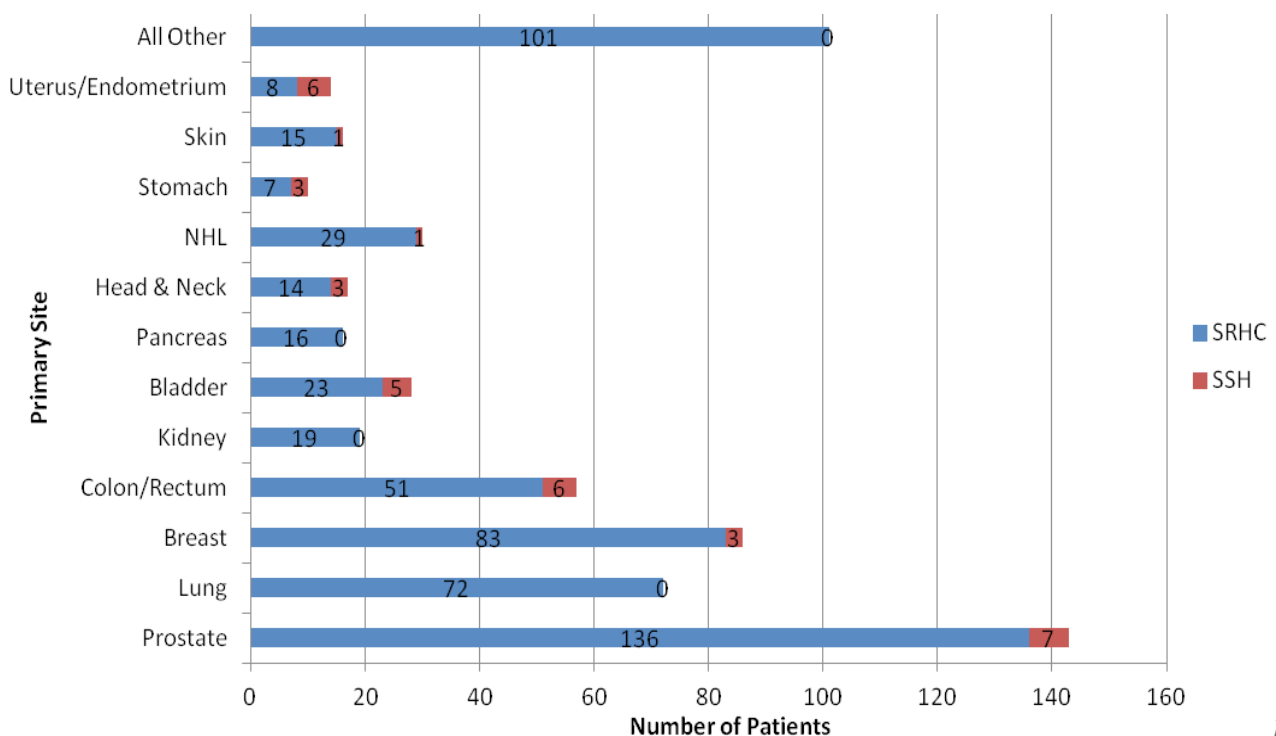
The Cancer Registry at Salina Regional Health Center collects, manages and analyzes cancer information on all cancer patients who have been diagnosed and/or treated at Salina Regional Health Center, Tammy Walker Cancer Center and Salina Urology.

From 2009 to 2011, Salina Regional Health Center and the Salina Surgical Hospital treated 1179 cases of cancer. Prostate, lung, and breast cancer were the most common types seen. The charts below show the distribution of the common types of cancer treated between 2009 and 2011.

2009 Primary Sites

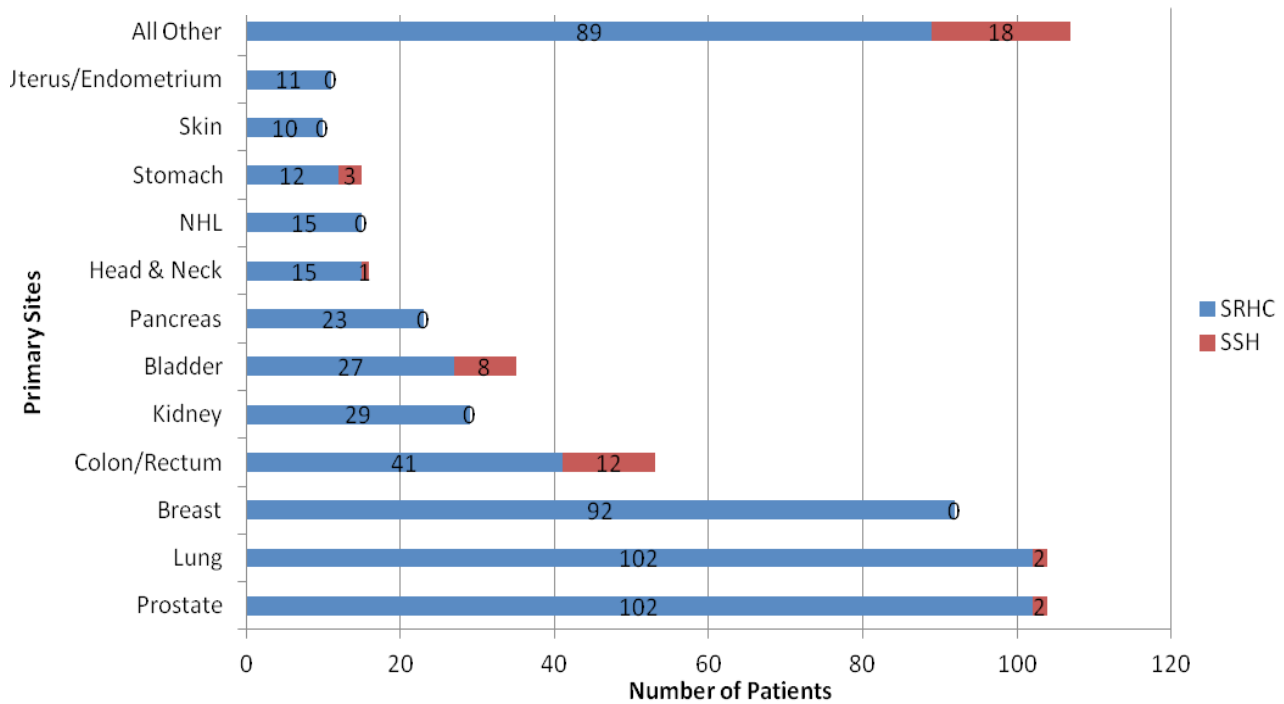


2010 Primary Sites



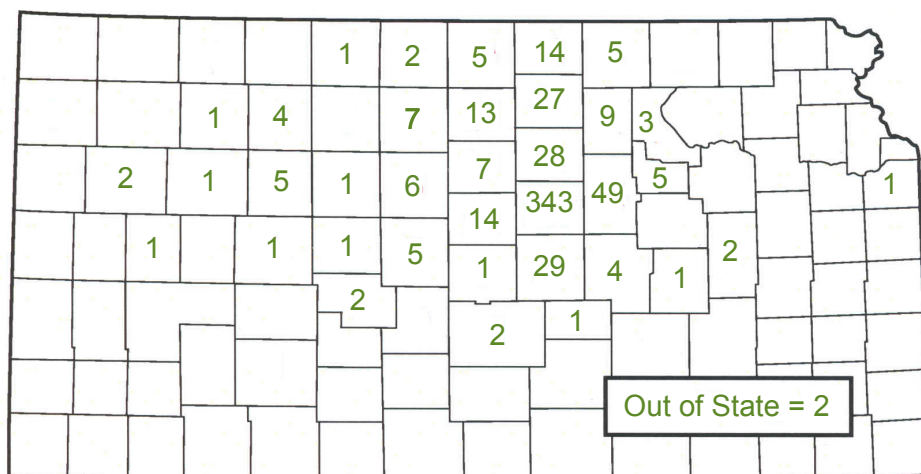
Cancer Registry *continued*

2011 Primary Sites



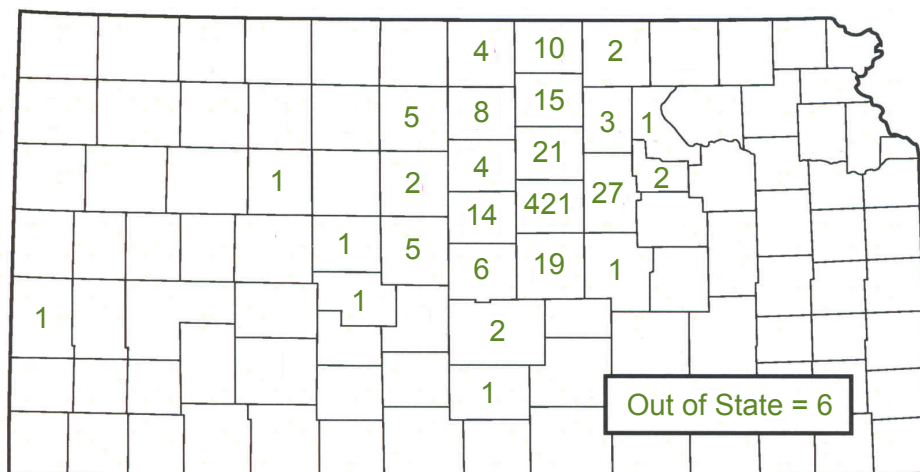
The majority of cancer patients treated at Salina Regional Health Center between 2009 and 2011 were Saline County residents. However, SRHC serves the entire region and 42 Kansas counties are represented in the patient population. The following maps show the counties of residence of the cancer patients treated at SRHC between 2009 and 2011.

2009 Cancer Patient County of Origin (605 Total Cases)

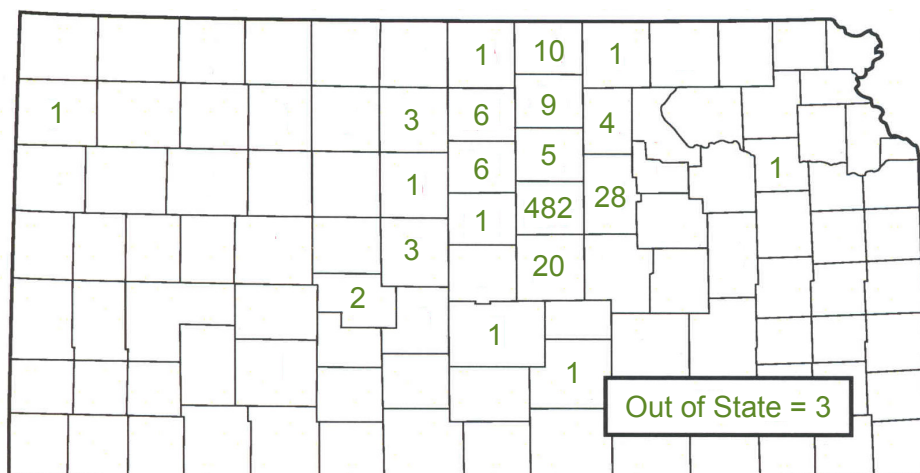


Cancer Registry *continued*

**2010 Cancer Patient County of Origin
(584 Total Cases)**



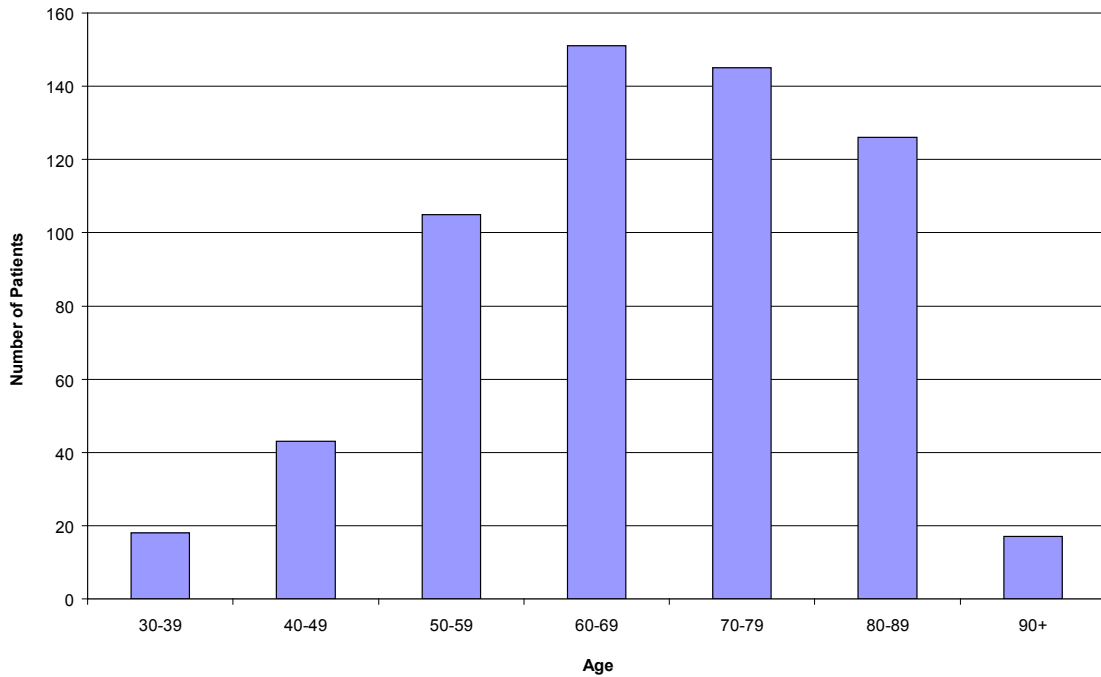
**2011 Cancer Patient County of Origin
(591 Total Cases)**



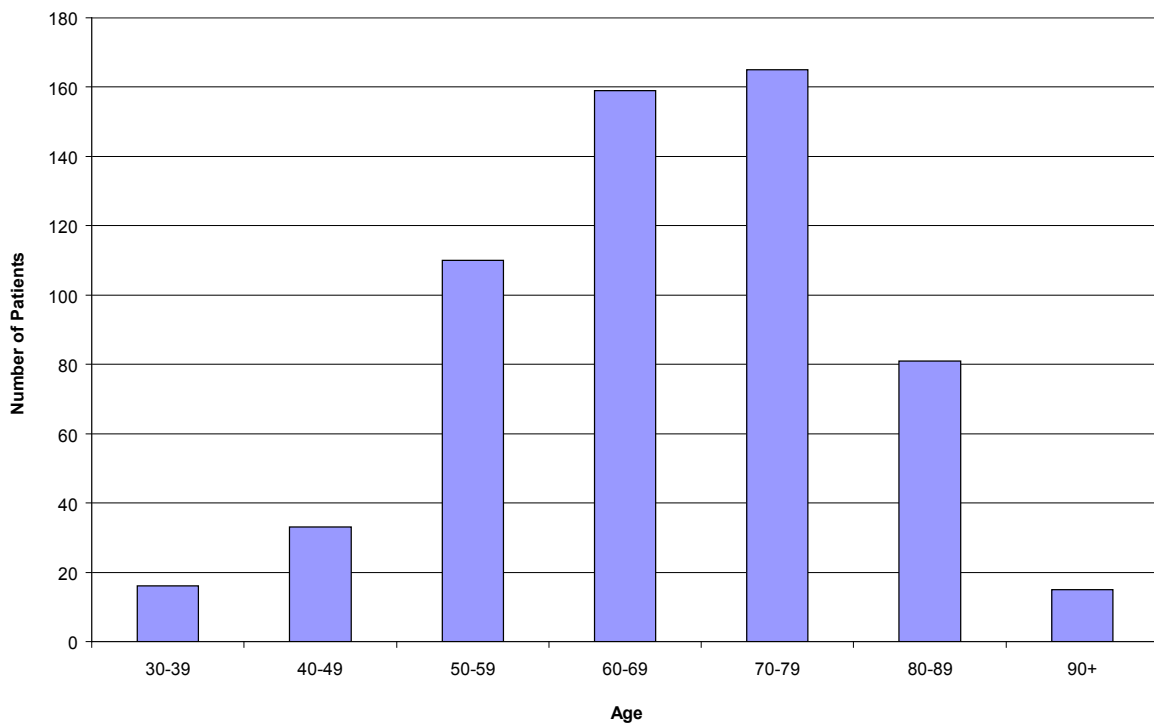
Cancer Registry *continued*

The age of cancer patients at diagnosis ranged from under 30 years old to over 90 years old. However, it was most common for cancer patients at SRHC to be between 60 and 79 years old at diagnosis. The following graphs show the age distribution of patients treated at SRHC.

2009 Age at Diagnosis

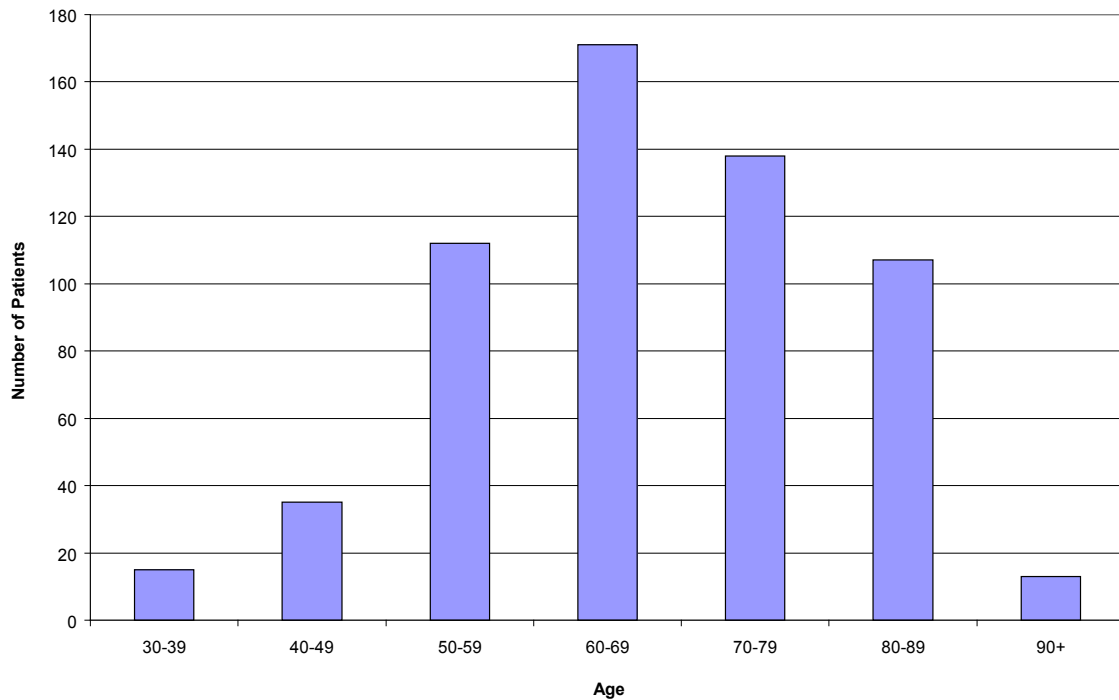


2010 Age at Diagnosis



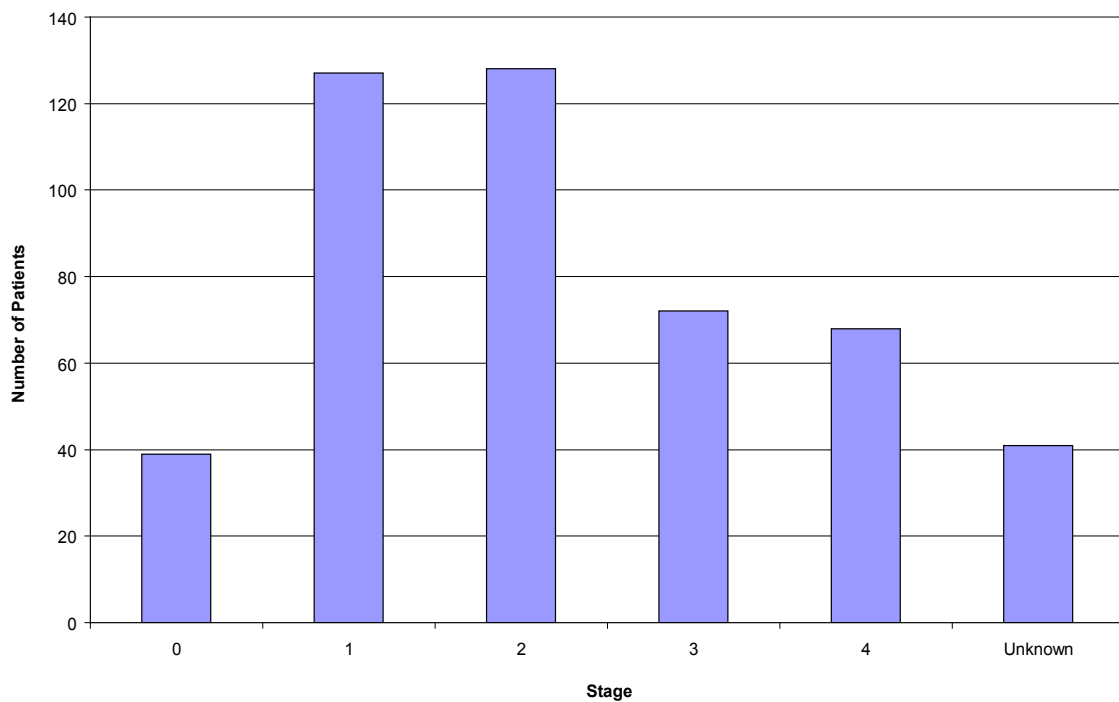
Cancer Registry *continued*

2011 Age at Diagnosis



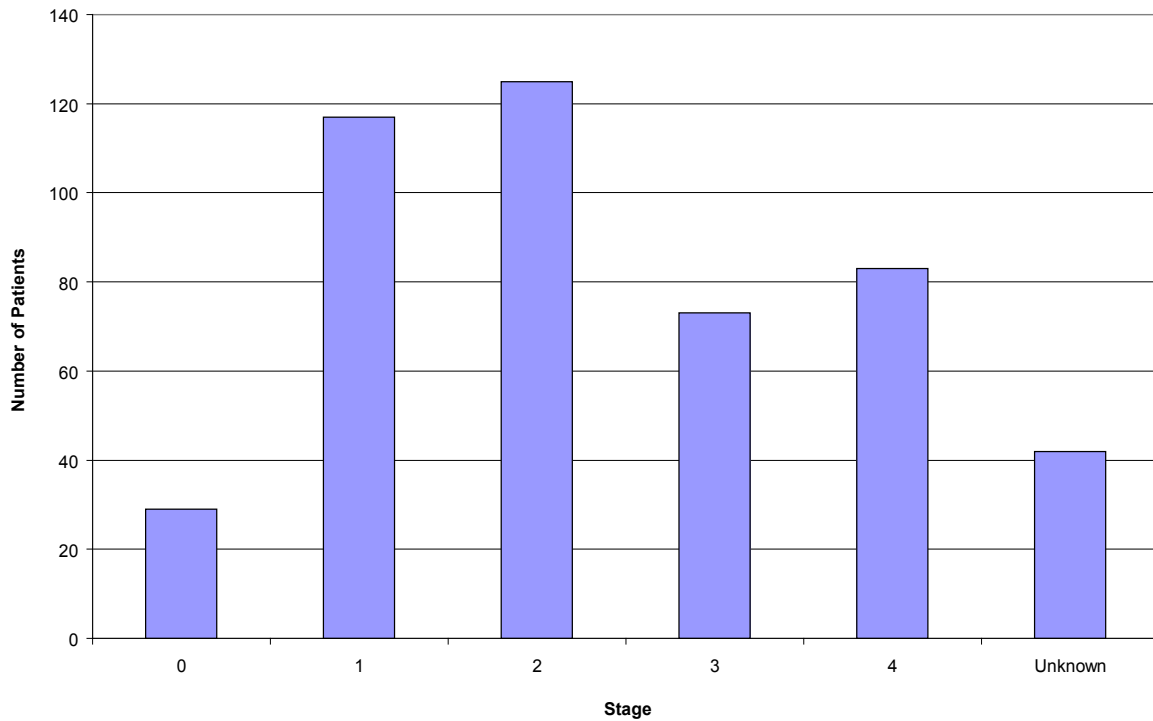
Salina Regional Health Center treats patients with all stages of cancer from Stage 0 to advanced Stage IV. Between 2009 and 2011, patients seen at SRHC were diagnosed with Stage I or Stage II cancer most often. The following graphs show the stage at diagnosis of SRHC patients.

2009 Stage at Diagnosis

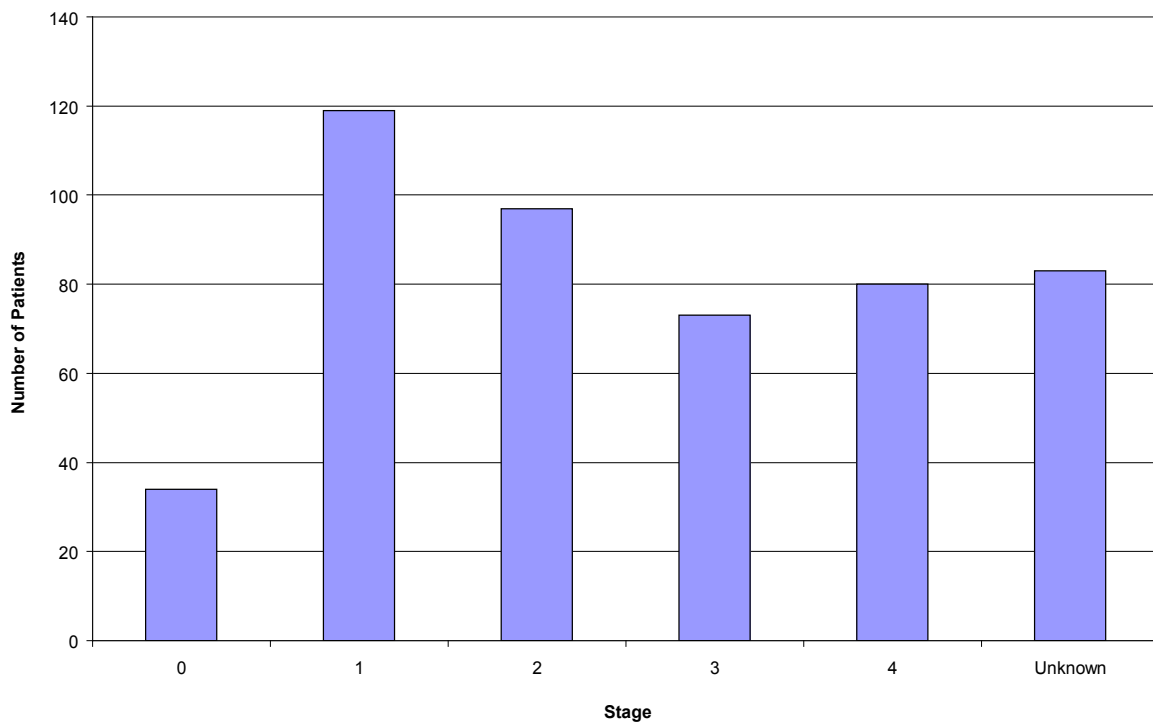


Cancer Registry *continued*

2010 Stage at Diagnosis



2011 Stage at Diagnosis



Tumor Conference Cases

2009 Tumor Conference Cases

Breast	14	Fallopian Tube	2
Lung	10	Thymus	2
Colon/Rectum	9	Blood	1
Bone Marrow	6	Tongue	1
Lymph node	5	Anus	1
Skin	4	Prostate	1
Kidney	4	Tonsil	1
Pancreas	3	Multiple Myeloma	1
Esophagus	3	GE Junction	1
Bladder	3	Ovary	1
Testis	3	Unknown	1
Endometrium	2	Small Bowel	1

2010 Tumor Conference Cases

Breast	17	Prostate	1
Lung	19	Tonsil	3
Colon/Rectum	6	Multiple Myeloma	2
Bone Marrow	5	GE Junction	2
Lymph node	5	Ovary	1
Skin	2	Unknown	3
Kidney	4	Thyroid	1
Pancreas	1	Stomach	3
Esophagus	1	Mediastinum	1
Bladder	1	Connective Tissue	1
Testis	2	Soft Tissue	1
Blood	2	Liver	1
Tongue	1	Small Bowel	1
Anus	2	Gallbladder	1

2011 Tumor Conference Cases

Breast	16	Prostate	4
Lung	14	Unknown	1
Colon/Rectum	5	Stomach	1
Lymph node	7	Liver	1
Skin	6	Soft Tissue	1
Kidney	2	Gallbladder	1
Pancreas	2	Smooth muscle	1
Esophagus	3	Endocrine	2
Bladder	4	Appendix	1
Testis	1	GIST	1
Endometrium	1	Cervical	2
Thymus	1	Penile	2
Blood	3	Bile Duct	1
Anus	1		



Tammy Walker Cancer Center

 Salina Regional Health Center

511 S. Santa Fe • Salina, KS 67402-3617

Cancer Committee Members 2009 – 2011

Larry Beck, MD, Chairman – Medical Oncology
William Cathcart-Rake, MD – Medical Oncology
Phillip Munoz, MD/David McKenzie – Pathology
Pam Davis, MD/Jeff Sparacino, MD – Diagnostic Radiology
Jody Neff, MD/Chris Rupe, MD – Surgery – Cancer Liaison Physician
Claudia Perez-Tamayo, MD – Radiation Oncology
Muhammad Ahmed, MD – Medical Oncology
Brian Smith, MD/Ryan Payne, MD – Urology
Mark Wiles, MD – Family Practice
Matthew Carey, MD – Psychology
Jake Breeding, MD – Surgery

Allied Health Members 2009 – 2011

Rebecca Troyer – Radiation Therapy
Pam Ehltz, CTR – Cancer Registry
Ava O’Flannagan – Quality Improvement
Terry Hauschel, RT – Radiology
Mary Quinley, RN – Medical Services Director
Lesli Schrader, RN – Hospice
David Mantz – Cancer Services Director
Joel Phelps, COO – Administration
Keri Kavouras, RN – Clinical Trials
Lynn Marshall, RN – Patient Navigation
Jeanne Byquist, LD – Dietary
Linda Hinnenkamp, RN – Outreach Services
Charlie Grimwood – Sunflower Health Network
Sandy Ferguson, RN – Mowery Clinic
Rev. Daniel Castillo – Chaplain
Jill Smith-Barker, LMSW – Social Worker
Steven Blanner, Rph/Melissa Hulse, Rph – Pharmacy
Ruth Cathcart-Rake, RT – Physical Therapy
Heather West – American Cancer Society
Charlotte Craig – Cancer Registry